

Product Description

The software is used to collect protection data from various types of protection devices such as numerical relays, disturbance recorders, event recorders, digital meters, and smart sensors. The software includes an extensive library of polling drivers for both proprietary and standard protocols.

The collected data includes digital fault records, sequence of events records, metering logs, device settings, and health checks. The data is collected and managed in compliance with NERC requirements for Disturbance Monitoring Equipment.

The software also includes specialized applications for access control and password management providing compliance with NERC CIP requirements. The software also offers a powerful historian for display, management, query, and archival of protection data.

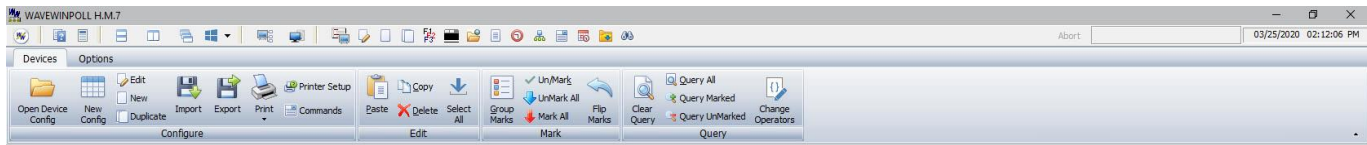
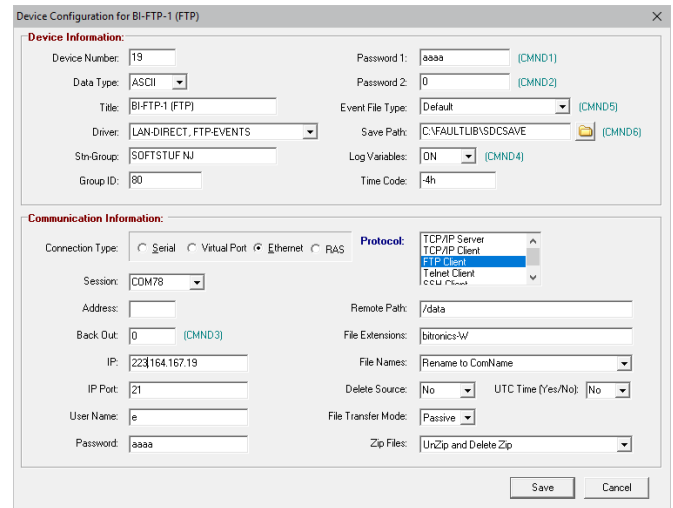
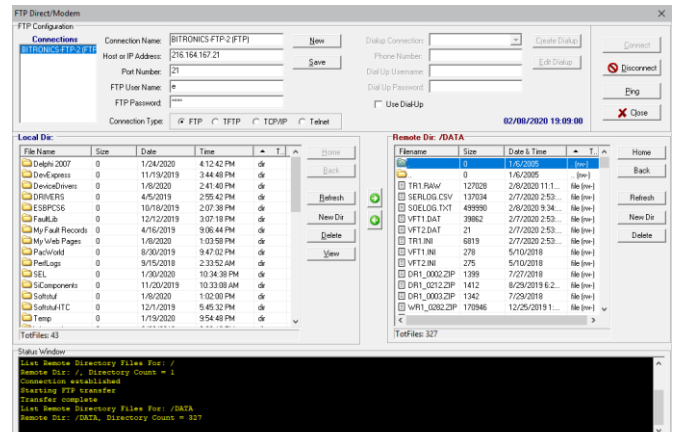
Features

- Polls up to 2000 devices simultaneously (periodically or upon demand).
- Supports RS232, RS485, Modem (ASCII, Binary), and Ethernet communications (TCP/IP, FTP, Telnet).
- Supports both star and multi-drop network topologies and reports periodically or by exception.
- Provides health checks including communications integrity, access logs, and polling errors.
- Provides terminal interfaces with programmable function keys and escape sequences.
- Imports/Exports spreadsheets (CSV files) for rapid configuration development and maintenance.
- Interfaces to Active directory for username and password authentication.
- Supports IEEE Std. C37.232 (COMNAME) Common Format for Naming Time Sequenced Data.
- Supports IEEE Std. C37.111 (COMTRADE) Common Format for Transient Data Exchange.
- Communication Manager to track connection errors.
- Sequence of Events Manager processing all incoming waveform files.
- Drivers Summary Reports.
- FID Reports.
- Last Waveform Date Extracted Reports.



Tools

- Create and maintain multiple device configurations.
- Duplicate option for fast configuration.
- Export configurations to CSV format.
- Import configurations from CSV formats.
- Archive and manage access and polling logs.
- Query and sort engines for user logs.
- Access devices with ASCII and Binary Terminals.
- Program function keys for manual polling.
- Program user scripts for automatic polling.
- Set Events Polling Start Dates.
- Program Command fields to use in the Drivers.
- Set Save Path for Multiple Devices.
- Fast Sort and Query options in the device table.
- Customize the device table columns.
- Search the logs files for key words.
- Manage/Change Device Passwords.
- Report System Activity to Primary and Backup Syslogs.

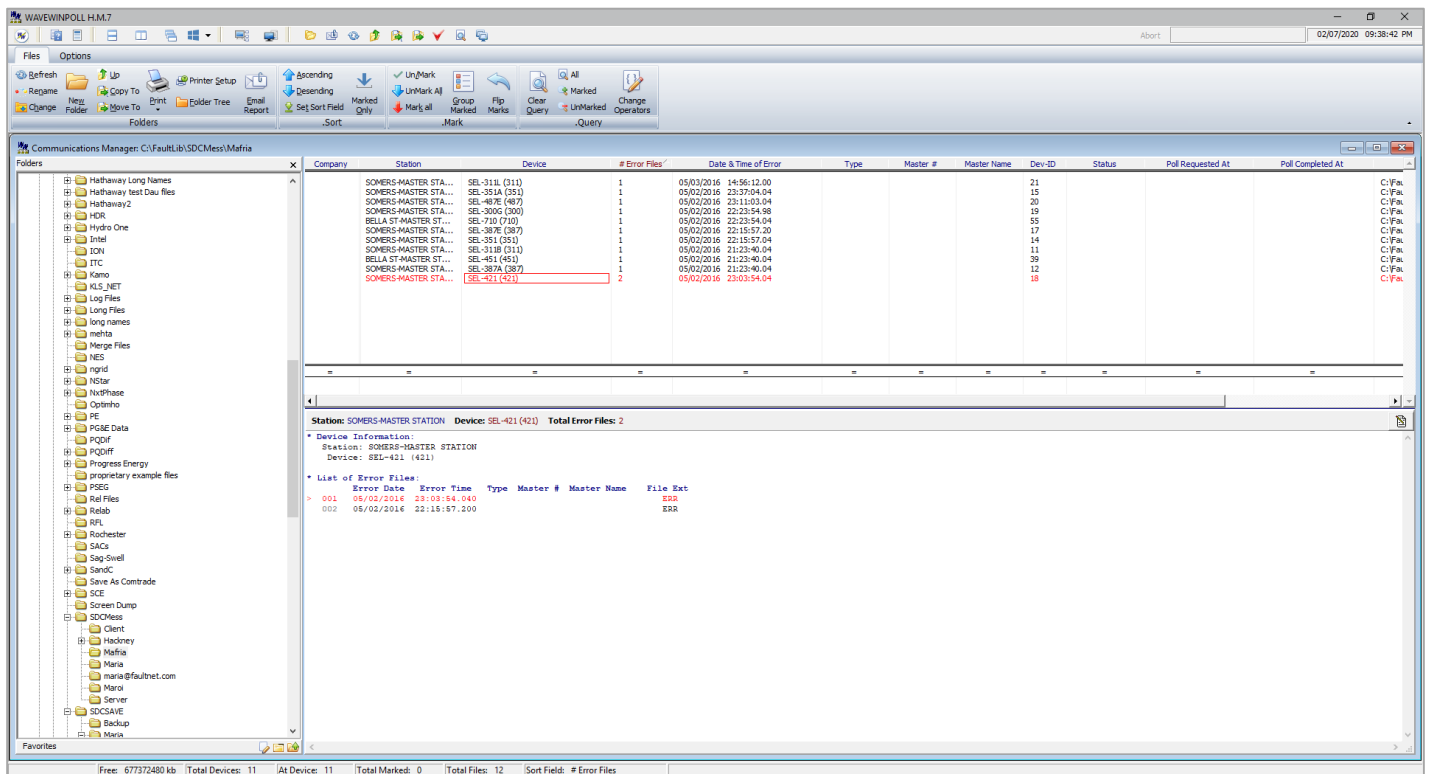
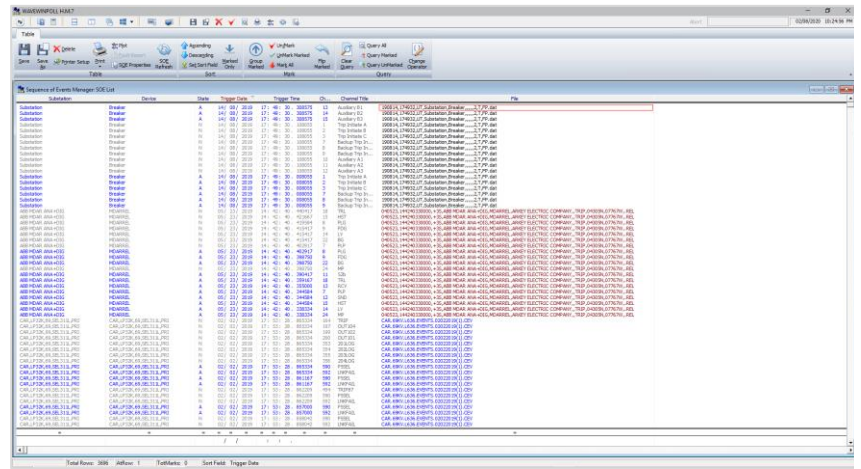


Connection Types

- Serial Ports RS232, RS422, and RS485
- Dialup Modems
- Virtual Serial Ports
- RAS (Remote Access Server)
- Ethernet (TCPIP)

Protocol Types

- Proprietary Protocols
- FTP (File Transfer Protocol)
- TCP/IP Server
- TCP/IP Client
- Telnet Client
- SSH Client
- IEC 61850 MMS



Requirements and Support Services

- **Requirements** - The software works with Windows NT, 7, 10 and 2008/2012/2016 servers. The software requires 32MB of storage space and, depending on usage, may use up to 2GB of available memory. The software supports local and shared drives on the network, it is small, structured, and non-intrusive (does not modify any operating system files).
- **Technical Support** - Standard technical support services are available at 800.818.3463 or at support@softstuf.com.
- **Custom Services** - For custom development services please contact our support team at support@softstuf.com.
- **Training** - We offer a variety of training classes, for information on these classes please use this link www.softstuf.com/wavewinclasses.html. For other training inquiries please contact our support team at support@softstuf.com.
- **Warranties** - Softstuf warrants that the software will substantially achieve the functionality as advertised and described in the Manuals. In the event any future deficiency is discovered in the software then Softstuf shall at its own sole expense make the changes necessary to correct said deficiency within a reasonable time of being notified.
- **New Devices** - Softstuf will initially provide an extensive library of drivers for working with various types of event and fault data records from various types of numerical relays, digital meters, and fault recorders. In the event new drivers are requested then Softstuf will develop said drivers at rates and lead times that are mutually agreed upon.

Licensing and Upgrades

- The Device Manager is a standalone executable. Each copy requires activation and is downloaded from the website. Several trial runs are allowed before activation is required.
- The Viewer can be installed on individual stations or on a network server. If used with a network server, then it will require an activation code per user account.
- Upgrades are available for download from the website, activation is also required.

Ordering Information

| Item | Part Number | Description |
|------|-------------|---|
| 1 | WWDM-WEB | Downloadable zip file containing the software, all software documentation and an install program. Open the install program and follow the instructions to begin using the software. |

Contact Us

Sales: sales@softstuf.com
Support: support@softstuf.com
Phone: 800.818.3463 • 215-922-6880
Hours: Monday thru Friday, 9:00 am to 5:00 pm EST

