

Appending and Merging Files from the Data Display

Prepared By:
Zara Makki
Associate Engineer
02 / 25 / 2022

Softstuf Inc.

US Domestic: 1-800-818-3463

International: 1-215-922-6880

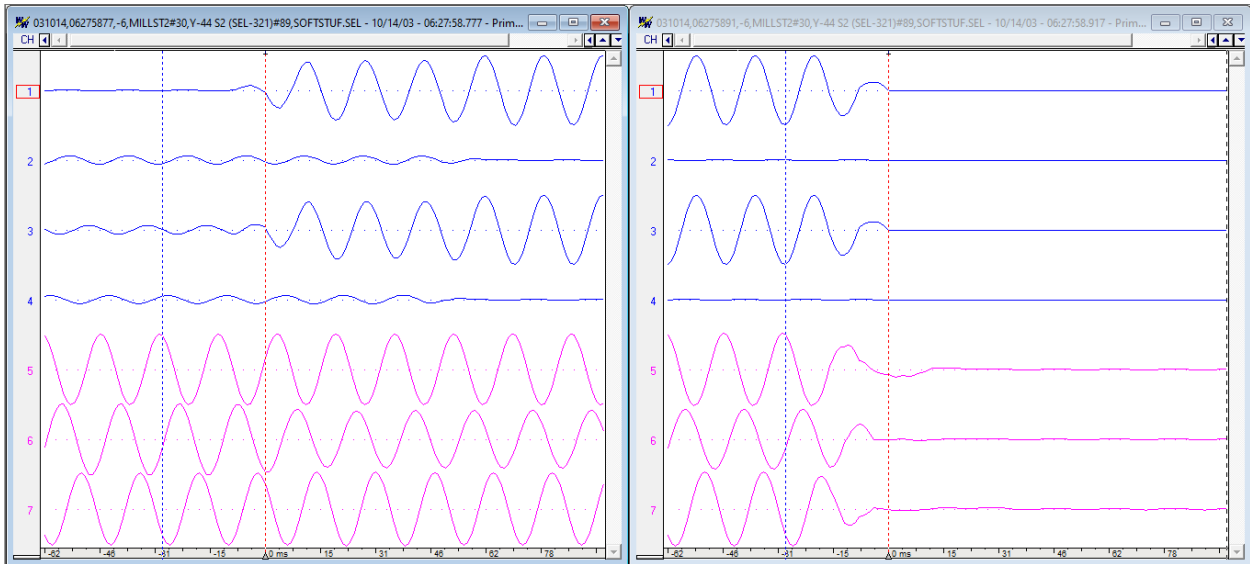
Fax: 1-609-677-8736

PO Box 40245 Philadelphia, PA 19106

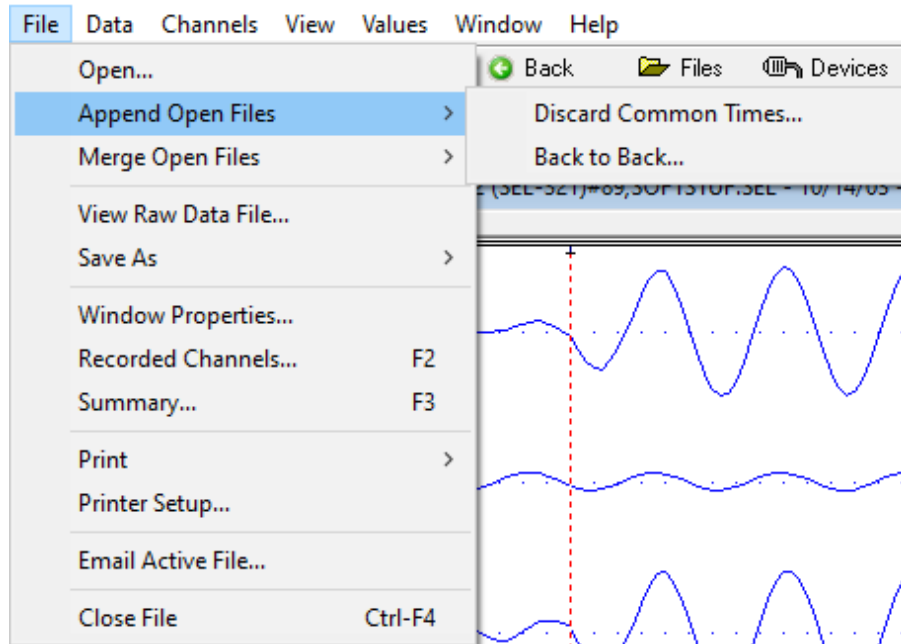
www.softstuf.com

How to Append Files

Step 1: Open the files to be appended.

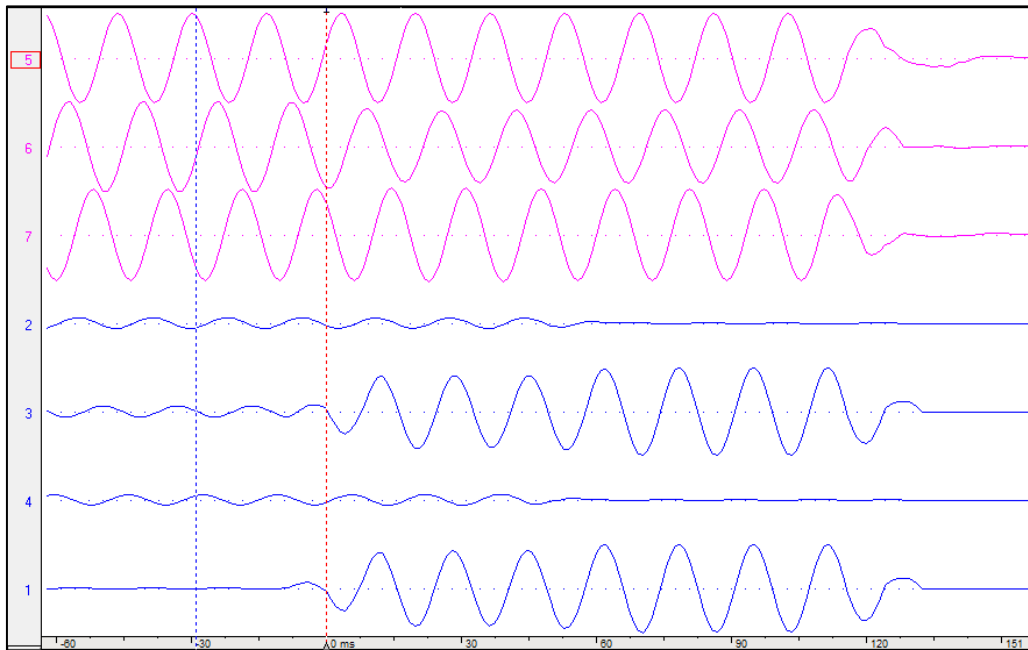


Step 2: Select the File menu and highlight Append Open Files as shown below.

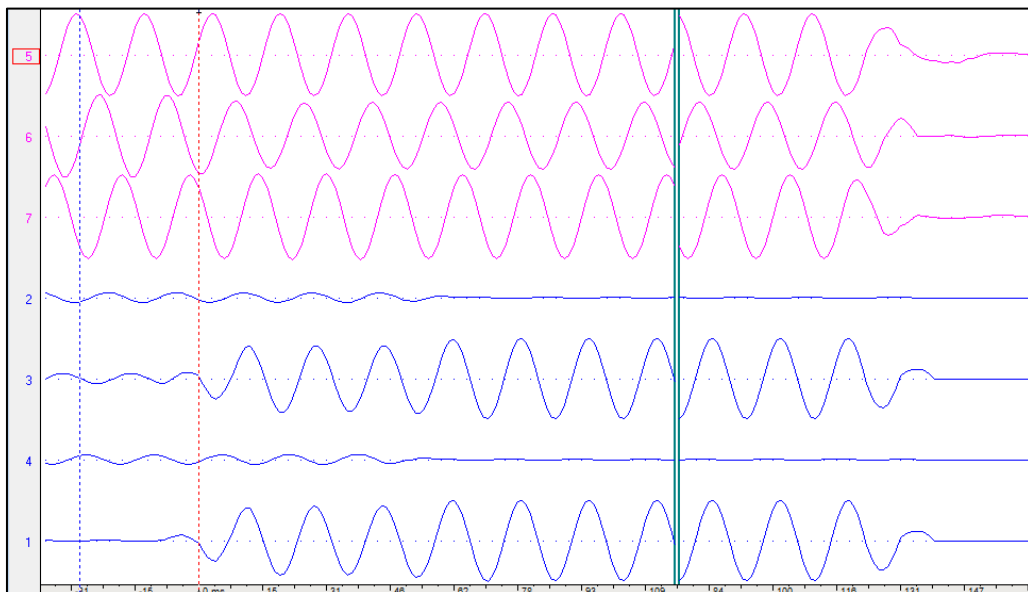


The two options under Append Open Files are to Discard Common Times which will remove any duplicate recordings when attaching files and, Back to Back which attaches files without checking for duplicates.

Step 3: Select one of the options under Append Open Files.



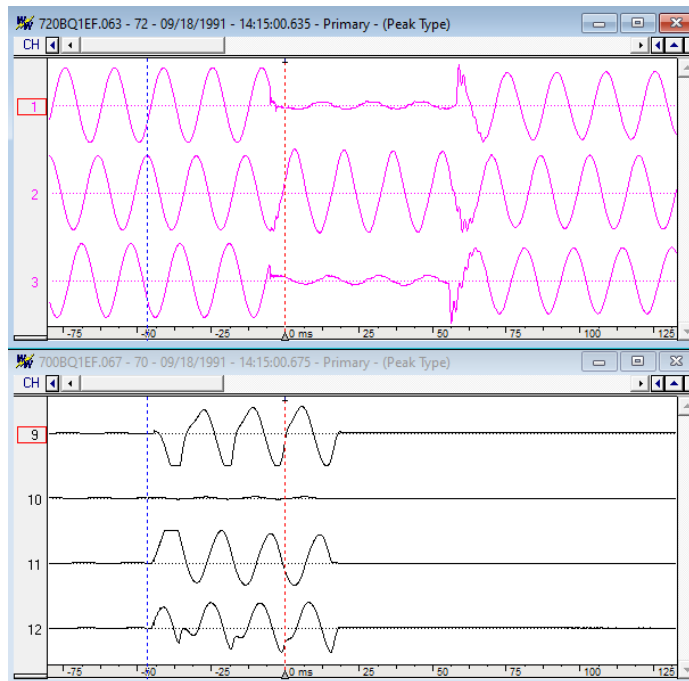
The above file was created by appending two files by discarding common times in which a continuous signal without any jumps or breaks appears.



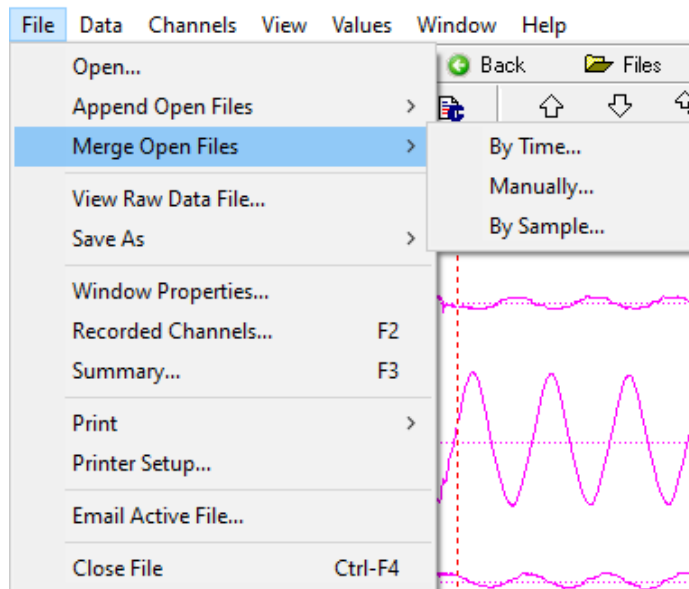
The above file was created by appending two files back to back. Here a break between the two files appears.

How to Merge Files

Step 1: Open the files to be merged.

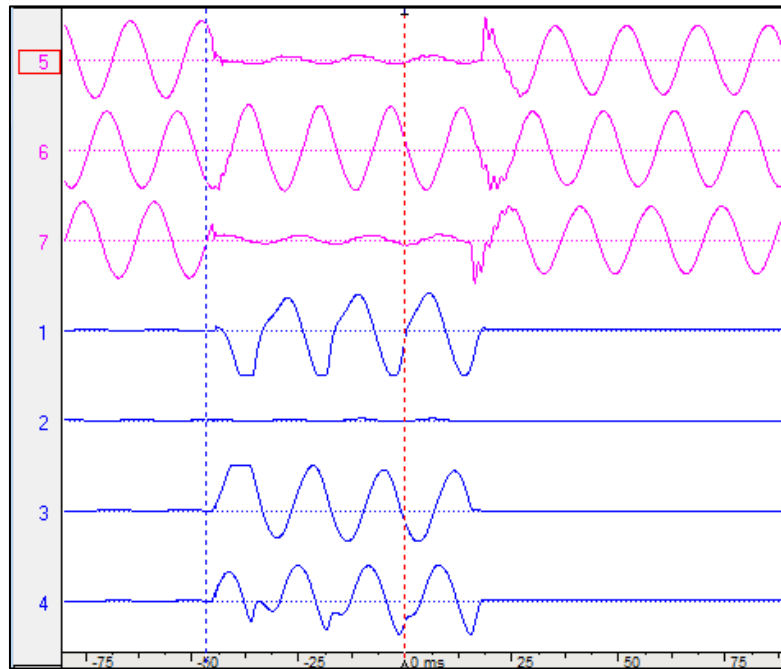


Step 2: Select the File menu and highlight Merge Open Files as shown below.

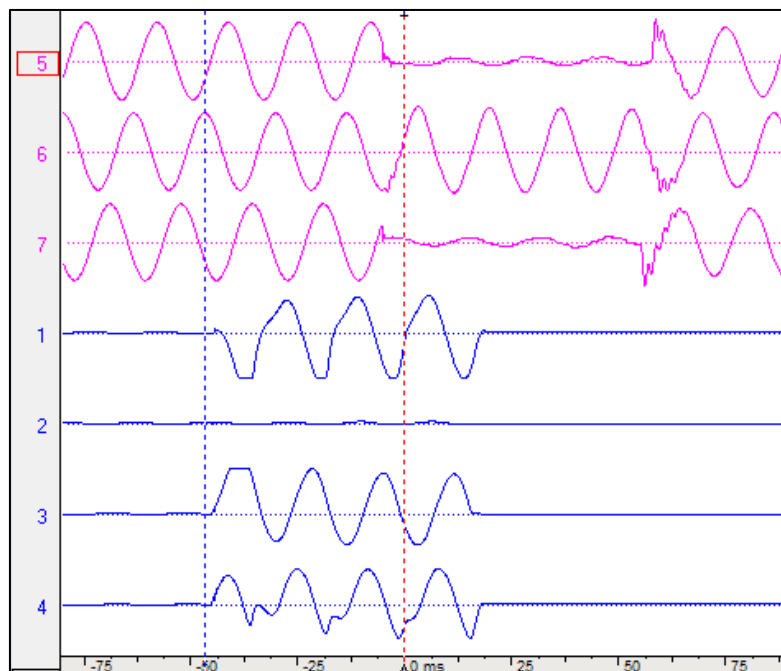


Files can be merged by time, manually or by sample. Merging files by time will ensure that the samples in each file will be aligned by time of recording. Merging files manually will align the files by the position of the data bar in each file. Merging files by sample will align the files by number of sample.

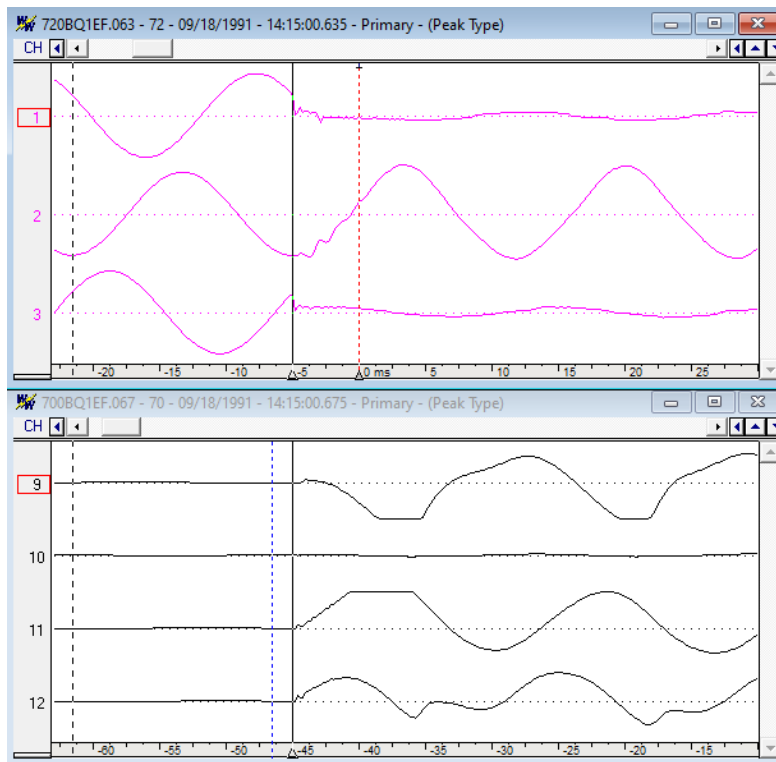
Step 3: Select one of the options under Merge Open Files.



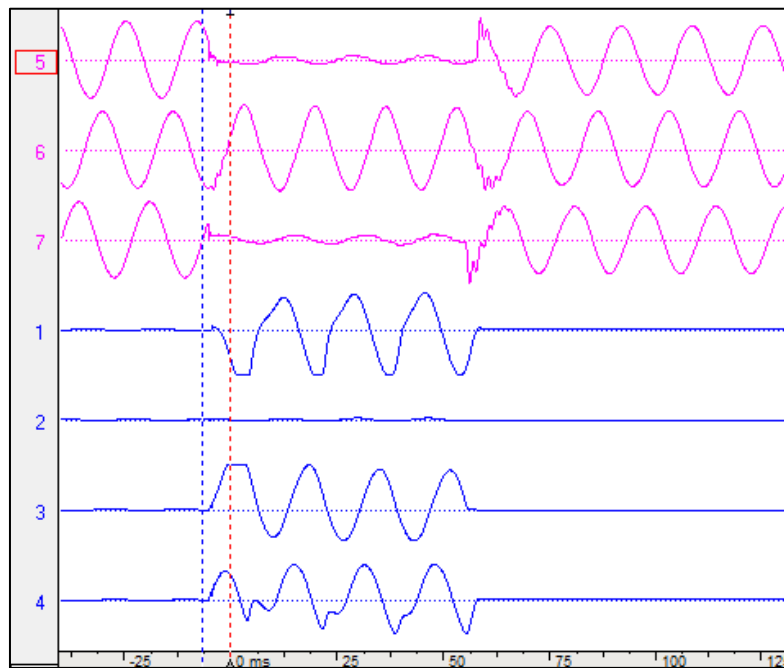
The file above was created by merging two files by time.



The file above shows the same two files merged by sample.



To merge files manually the data bar in each file should first be set to the beginning of the fault as shown above.



The resulting file is shown above. Here the files were alligned by the position of each data bar. This method is useful for files produced by recording devices that are not GPS synchronized.

Note: When appending files by discarding common times Wavewin provides the option to discard the common times from the oldest or latest file. When merging files each channel is automatically renamed so that the file name is in front of the channel name, Wavewin also provides the option to keep the original channel names. These options can be found under the properties shortcut on the toolbar shown below.



In the properties dialog box, the options can be selected under the Append / Merge tab.

