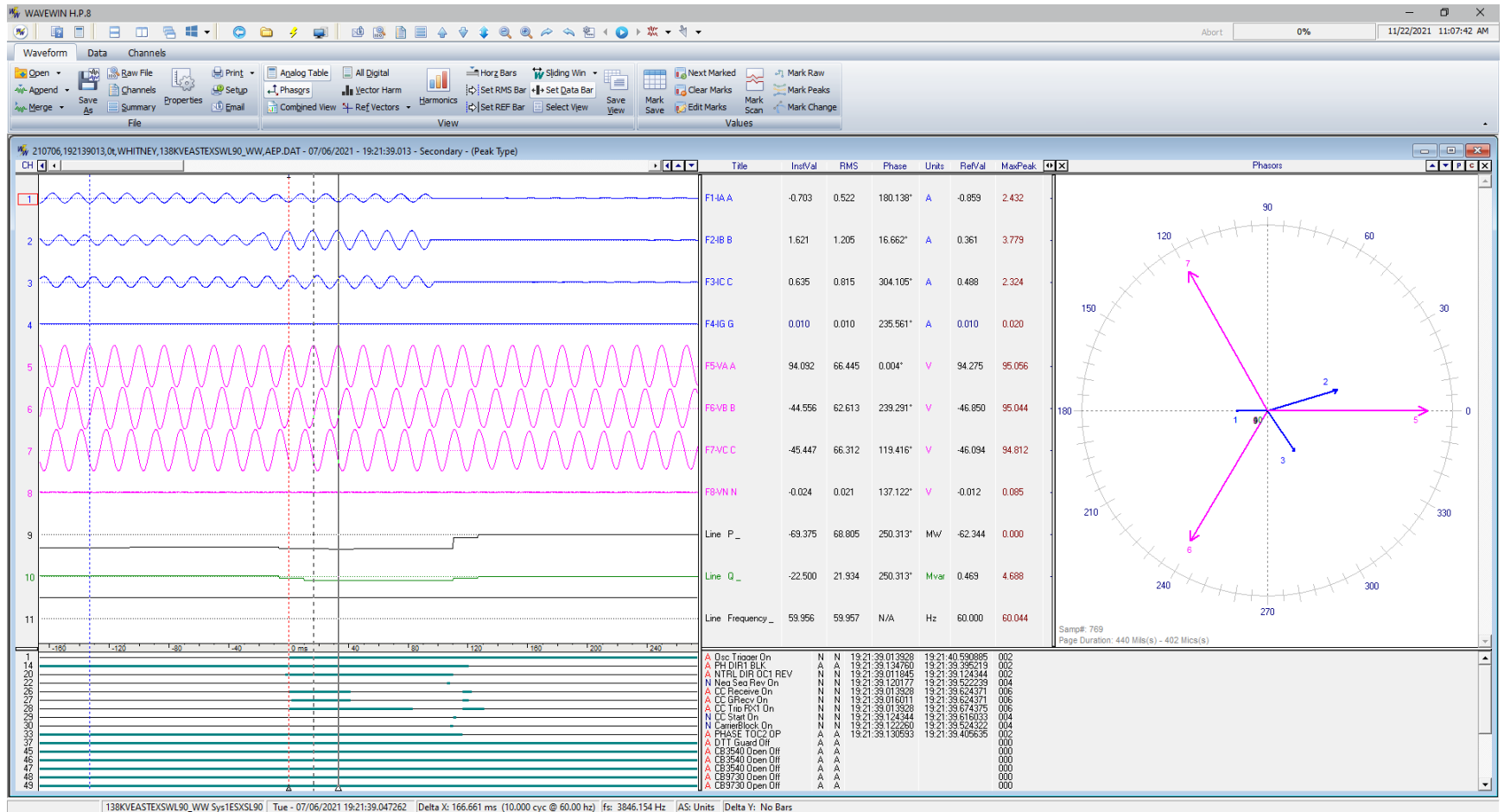
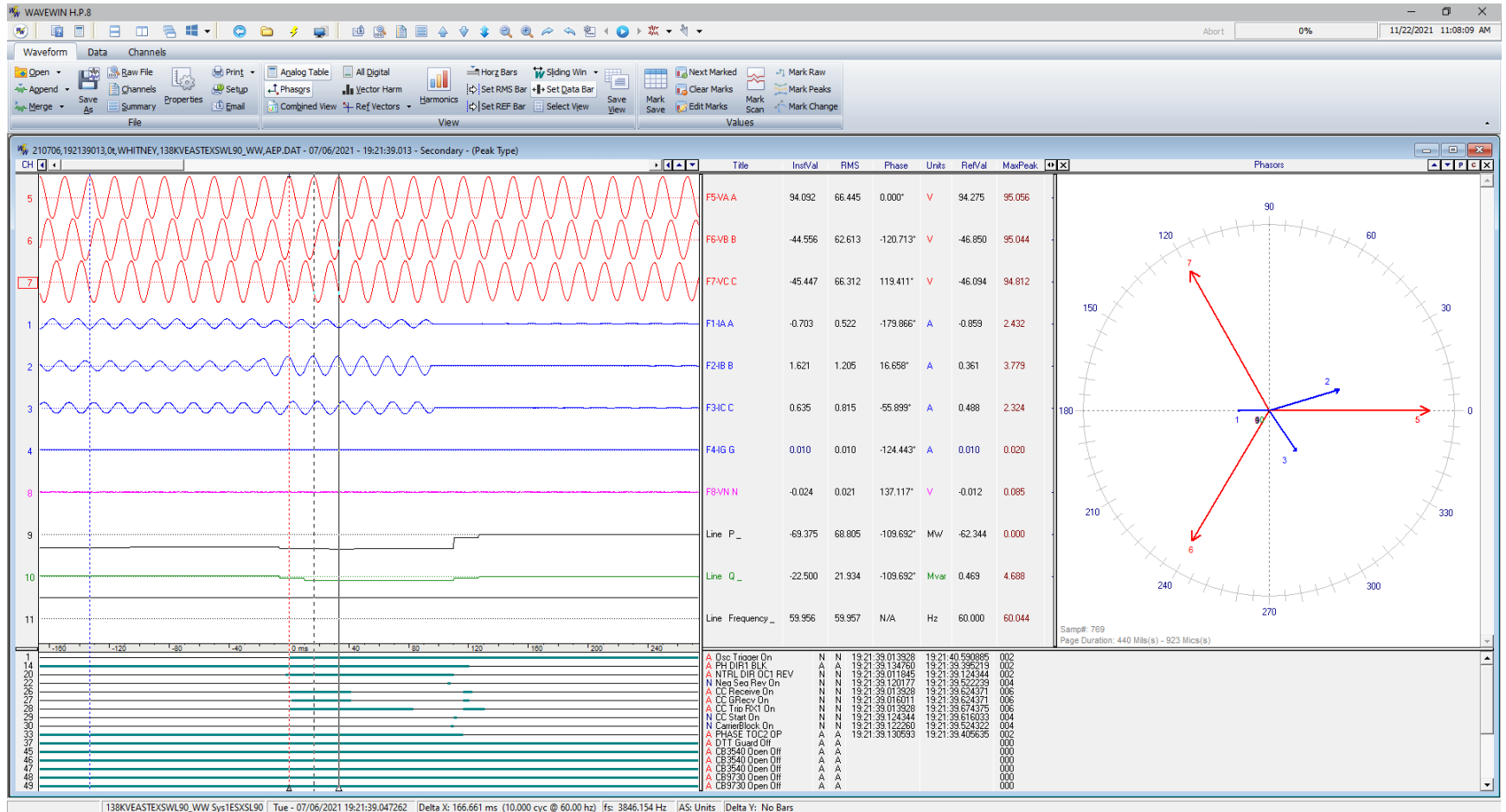


## Setting Up a View in Wavewin.

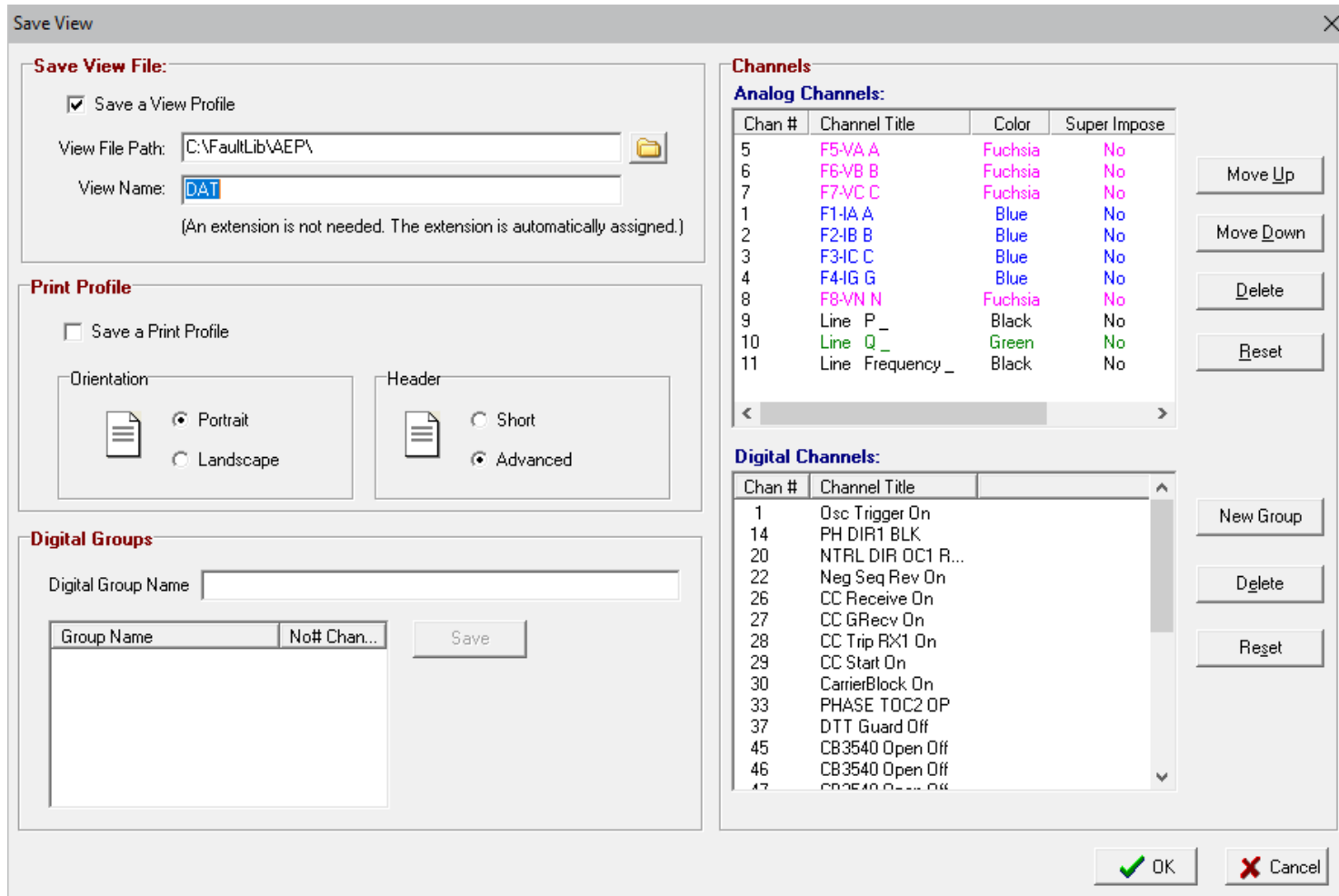
1. Open a Waveform or Load file.



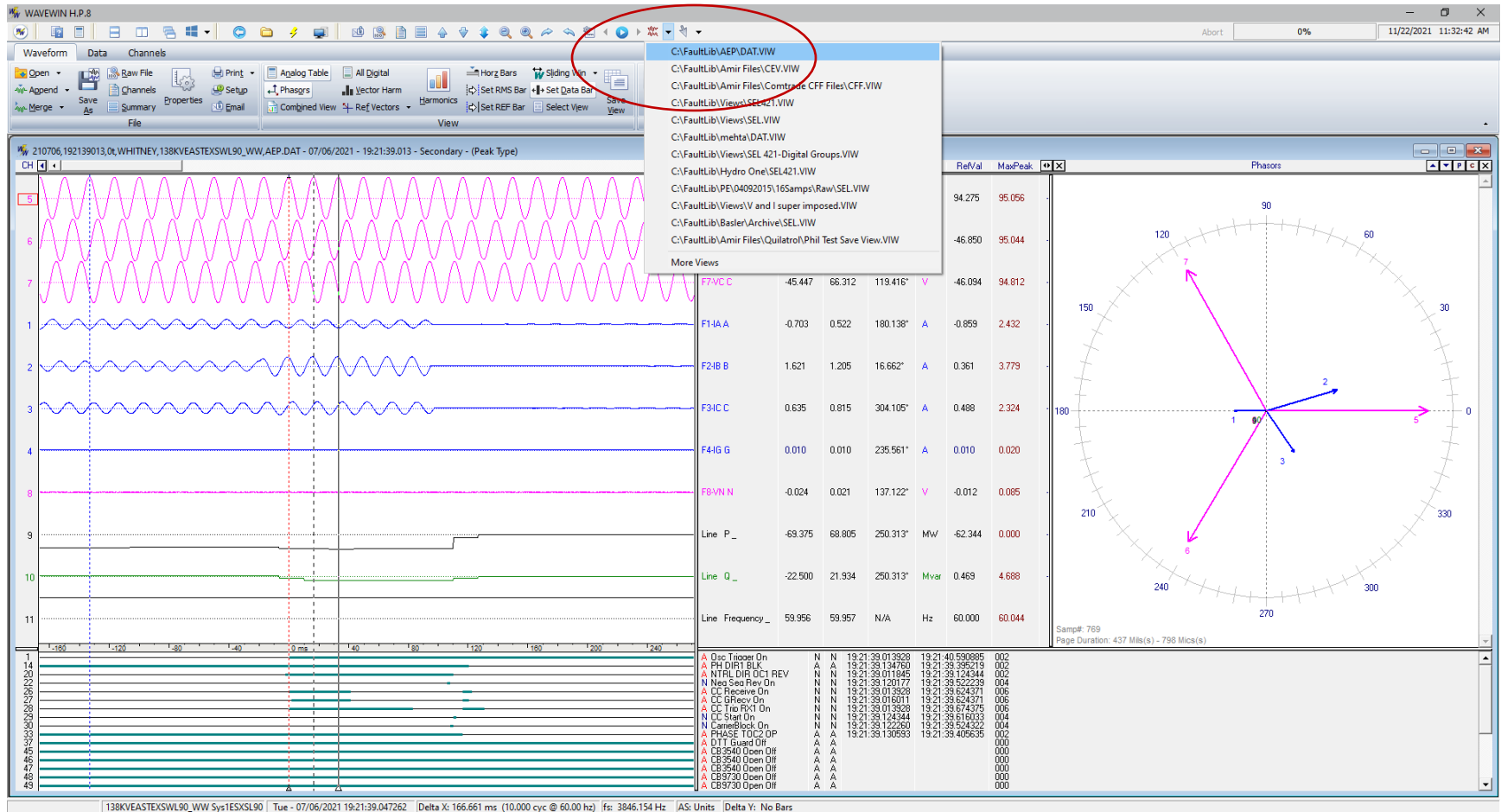
- Arrange the channels in the desired positions. Mark the channels (spacebar or mouse) and use the + or – keys to move the channels up or down or drag them to the desired position by holding the mouse down over one of the marked channels in the analog channel table or the channel number section and drag to the desired position.



- Open the Save View Dialog. In the menu system select the Save View... option under the View menu. In the Ribbon system click the Save View option under the Waveform tab in the View section. The View path is defaulted to the same path as the displayed file and the view name is the extension of the file displayed. If you want the view to be automatically applied when a file is opened keep the default information displayed when the Select View dialog is opened. If you want to create different views then you can name each view and select them from inside the data plotting window.



4. Once the View is saved it will be added to the View drop down button in the button menu.



5. To have the view automatically applied when a file is open go to the File Manager and open the Display Dialog. First menu option under the Options menu/ tab. Select the Data Plotting tab and select Yes under the Open View drop down box. Click OK to save.

The image shows a 'System Settings' dialog box with the 'Data Plotting' tab selected. The 'Open View' dropdown menu is highlighted with a red circle. The dialog box contains several sections for configuring system settings.

**System Settings** [X]

Use the Tabs below to define each Setting.

File Columns | General Table Settings | **Data Plotting** | Device Manager | Help Files

**General Settings:**

- Open View: **Yes** (highlighted)
- Digital Toggled Channels: No
- Analog Table Font Size: 8
- Open Files w/ Primary Values: No

**Process Files:**

- Process Type: Rename with ,WWD
- Batch Files: New Files
- Versioning: No
- Process #: 256
- PDF Files: Breaker Opt Files
- Convert DT to Local: No
- PDF Width: 1920
- PDF Height: 1080

**Duration Calculation:**

- Current:** If 1st Prefault RMS Value < 100 Then Trigger Value = 500  
else Trigger Value = Prefault RMS \* 5
- Voltage:** If 1st Prefault RMS Value > 40 Then Trigger at 15 %.

**Append Files:**

- Append ComName Files: No within 5 minute

ShortCuts [Ok] Cancel

6. Open the file that was used to save the view and the view will be automatically applied.

