



COMNAME Conformity Check

Version 1.0

Quick Start

SOFTSTUF INC.

SOFTSTUF, INC.
SOFTWARE STRUCTURE FOR UNLIMITED FUNCTIONALITY
P.O. BOX 40245
PHILADELPHIA, PA 19106-0245
1-800-818-3463 · 215-922-6880
www.softstuf.com
www.wavewin.net

Copyright © Softstuf Inc.

Preface

This document contains information about Comname Conformity Check. Several examples are provided including an example report from a real Comname file.

This document is intended for use by any individuals working with Comname files.

Table of Contents

CHAPTER 1.....	4
System Requirements	4
Download and Install from the Web.....	4
Copy and Install from a USB.....	4
Activation Code	5
CHAPTER 2.....	6
Application Purpose	6
Buttons and Controls.....	6
Select Type of Check.....	7
Enter Directory or Filename	7
Chose Report Directory	8
Execute Check.....	8
View Error Report	9
Help.....	9
CHAPTER 3.....	10
Possible Errors.....	10
CHAPTER 4.....	11
List of Possible Errors	11
CHAPTER 5.....	13
Technical Support.....	13

CHAPTER 1

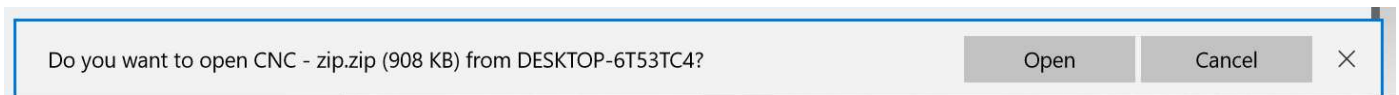
System Requirements and Installation

System Requirements

- Windows XP, 7, 8, or 10
- 1 MB of storage available
- 7 MB of RAM available

Download and Install from the Web

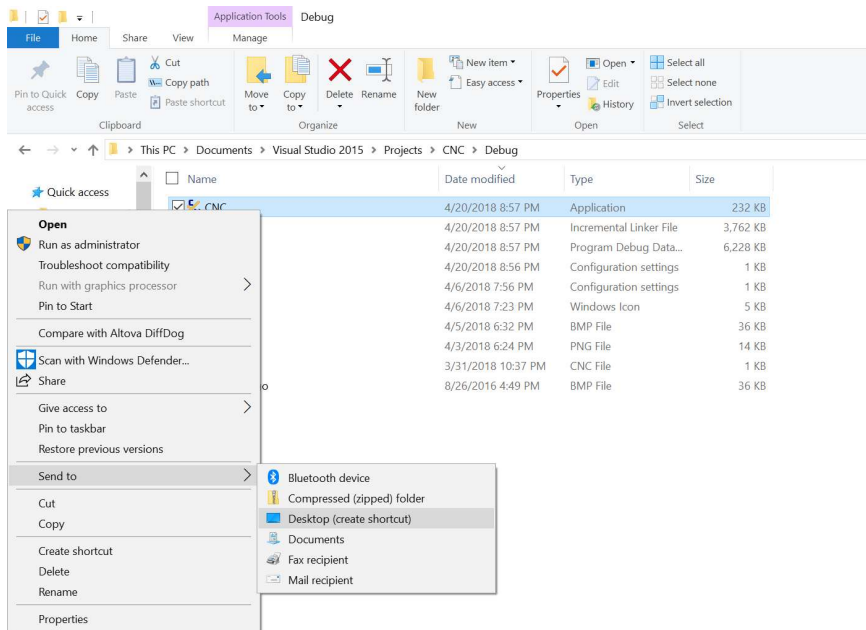
1. To download and install the software from the internet go to www.wavewin.net.
2. Click on the bottom right picture labeled Conformity Package.
3. Enter the username and password provided to you by Softstuf. Please note that the username and password is case sensitive.
4. Click on either the full Conformity package or the COMNAME Conformity Check link.



5. When you download the executable a message similar to the one displayed above should show up on your screen. Click on the open button, this should save a zipped folder to your downloads directory.
6. Take the contents of this folder and extract or unzip them to any folder other than "Program Files", or "Program Files (x86)".
7. Create a desktop shortcut for the COMNAME Conformity Check executable. From there the application is installed and ready to be used.

Copy and Install from a USB

1. Create a folder in off the rout directory called COMNAMEConformityCheck.
2. Copy the contents of the folder located on the USB to the folder you have created.
3. Create a desktop shortcut for the Comtrade Conformity Check executable. From there the application is installed and ready to be used. See the picture below for an example.



Activation Code

When the software is first running this dialog box should appear.

Dialog ✕

Enter Activation

Your serial number is listed below. Please email the serial number to sales@softstuf.com
An activation code will be emailed to you.

Serial Number:

Enter the Activation Code emailed to

Enter Activation Code:

Number of Activations Left:

Number of Possible Evaluations: 3

The application will allow the user three evaluations where they can use the software without entering an activation code. Once the user has used all three evaluations the software will no longer be accessible in till the activation code has been entered.

To receive an activation code please email the serial number listed in the edit box labeled “Serial Number:” to sales@softstuf.com. An activation code will be sent to the user promptly.

CHAPTER 2

Application Buttons and Controls

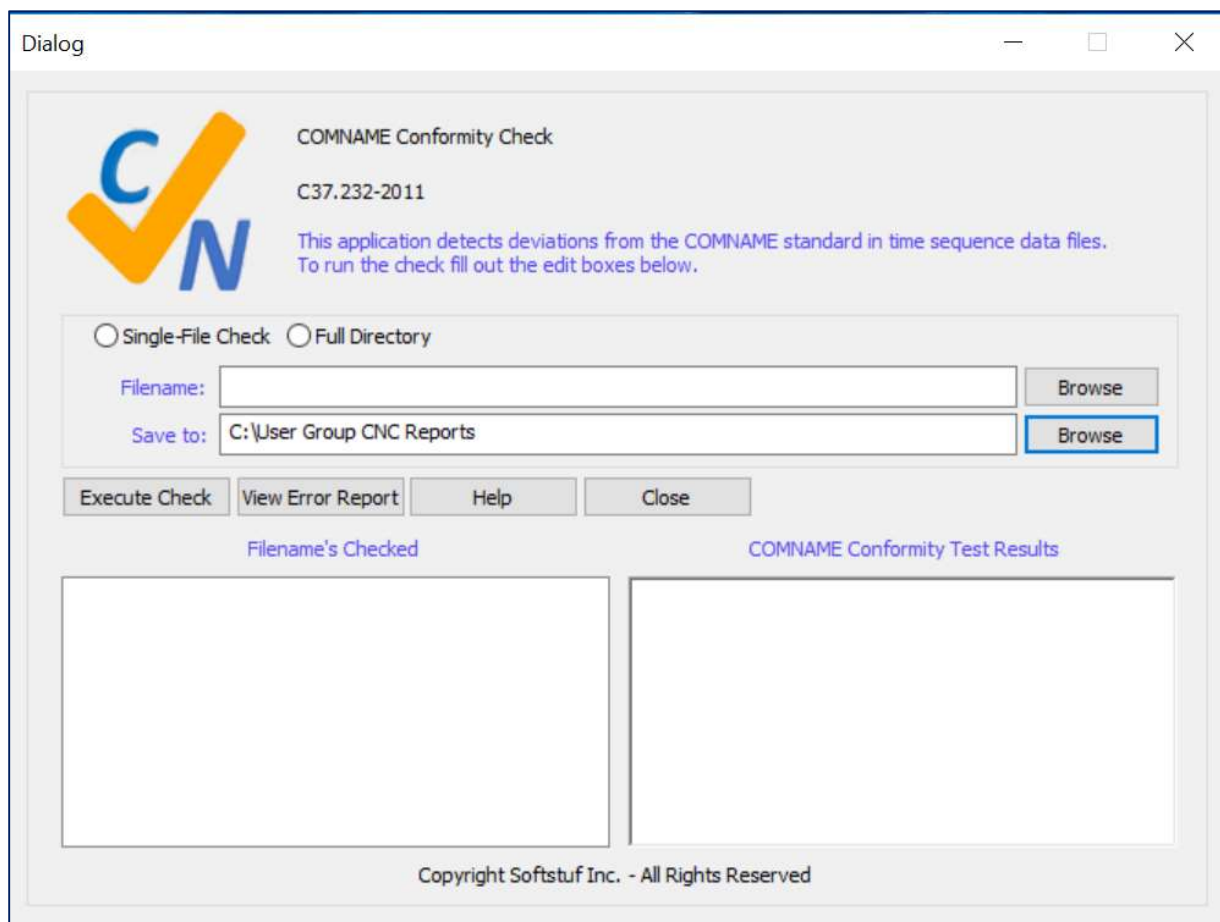
This chapter describes the purpose of the application and gives a detailed tutorial on how to use the application.

Application Purpose

The purpose of COMNAME Conformity Check (CNC) is to make the process of finding format errors in time sequence data file names fast and easy. By identifying format errors quickly and creating a report file, users will be able to see exactly where the errors are, and how to fix them.

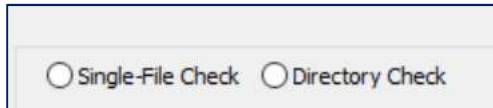
Buttons and Controls

When COMNAME Conformity Check (CNC) is opened and the activation code is entered it should look like this. (The report path varies.)



Select Type of Check

To check a single file, click on the button labeled “Single-File Check”. To check a full directory, click on the button labeled “Directory Check”.

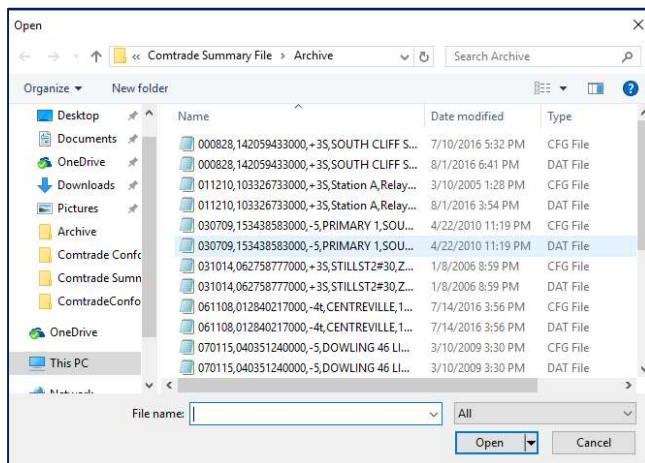


Enter Directory or Filename

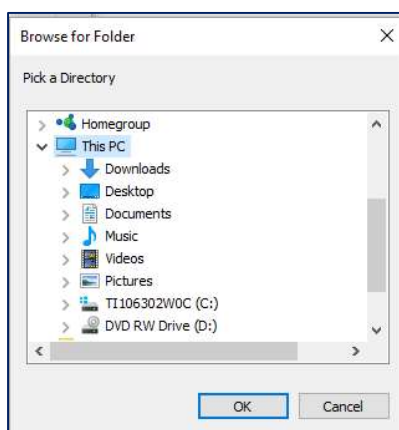
Once the type of check has been chosen, enter or browse for the directory or filename the user would like to check. If a single file check has been chosen please enter any time sequence data file. If the user wants to increase the size of the file manager dialog box the program will remember that size and open it to that specified size every time it is re-opened.



This file manager will open when the user clicks the Browse button during a single file check.

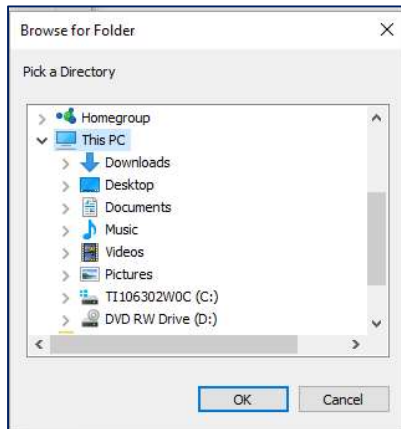


This directory manager will open when the user clicks the Browse button during a full directory check.



Chose Report Directory

In the second edit box labeled “Save to:” enter or browse for the directory all report files will be saved. The dialog box opened through the browse button will not allow the user to create a new folder. If the user wants to create a new folder to save the report files to, create that folder before running the application.



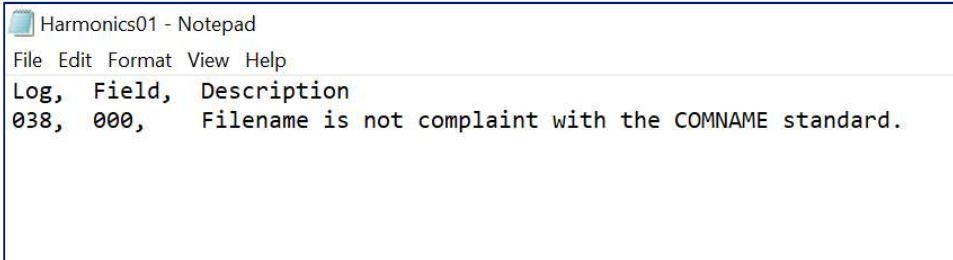
Execute Check

Once the directory or filename and the report path has been chosen the user can click the “Execute Check” button. The name of the file just read will appear in the list box labeled “Filename’s Checked” and the results of the check will appear in the edit box labeled “COMNAME Conformity Test Results”. In a single file check the results will automatically appear in the “COMNAME Conformity Test Results” edit box. In a full directory check to see the results the user must click on the corresponding filename in the “Filename’s Checked” list box.



View Error Report

To view a filename's error report, click on the filename in the list box labeled "Filename's Checked". Then click the button labeled "View Error Report".

A screenshot of a Notepad window titled "Harmonics01 - Notepad". The window has a menu bar with "File", "Edit", "Format", "View", and "Help". The text content is as follows:

```
Log, Field, Description
038, 000, Filename is not complaint with the COMNAME standard.
```

Help

To view the manual, click the button labeled "Help".

CHAPTER 3

List of Possible Program Errors

Possible Errors

1. If the edit box labeled “Comtrade Conformity Results” fails to be filled up a message box will appear that says, cannot find report. This is because the directory the report is saved in doesn’t exist.
2. If the program does not open an error report when the user clicks the “View Error Report” button it is because a filename in the list box labeled “Filename’s Checked” has not been selected.
3. If the program cannot open any error reports the computer it is running on may not have Notepad installed.

CHAPTER 4

List of Possible Filename Errors

List of Possible Errors

1. The Start Date must be 6 digits.
2. The first two digits of the start date must be between 00 - 99.
3. The second two digits of the start date must be between 01 - 12.
4. The last two digits of the start date must be between 01 - 31.
5. The Start Time must be between 4 and 12 digits.
6. The first two digits of the start time must be between 00 - 23.
7. The second two digits of the start time must be between 00 - 59.
8. The third two digits of the start time must be between 00 - 60.
9. The Time Code must be between 1 and 7 digits.
10. If the Time Code is one character in length that character must be a 0.
11. If the Time Code is two characters in length the first character must be the sign or 0.
12. If the Time Code is two characters in length the second character must be a digit or the letter T.
13. If the Time Code is three characters in length the first character must be the sign.
14. If the Time Code is three characters in length the second character must be a digit.
15. If the Time Code is three characters in length the last character must be a digit or the letter T.
16. If the Time Code is four characters in length the first character must be the sign.
17. If the Time Code is four characters in length the second character must be a digit.
18. If the Time Code is four characters in length the third character must be a digit or the letter H.
19. If the Time Code is four characters in length the fourth character must be the letter H or the letter T.
20. If the Time Code is five characters in length the first character must be the sign.
21. If the Time Code is five characters in length the second character must be a digit.
22. If the Time Code is five characters in length the third character must be a digit or the letter H.
23. If the Time Code is five characters in length the fourth character must be a digit or the letter H.
24. If the Time Code is five characters in length the fifth character must be the letter T or the letter M.
25. If the Time Code is six characters in length the first character must be the sign.
26. If the Time Code is six characters in length the second character must be a digit.
27. If the Time Code is six characters in length the third character must be a digit or the letter H.

28. If the Time Code is six characters in length the fourth character must be the letter H or a digit.
29. If the Time Code is six characters in length the fifth character must be a digit or the letter M.
30. If the Time Code is six characters in length the sixth character must be a digit or the letter M or the letter T.
31. If the Time Code is seven characters in length the first character must be the sign.
32. If the Time Code is seven characters in length the second character must be a digit.
33. If the Time Code is seven characters in length the third character must be a digit or the letter H.
34. If the Time Code is seven characters in length the fourth character must be the letter H or a digit.
35. If the Time Code is seven characters in length the fifth character must be a digit.
36. If the Time Code is seven characters in length the sixth character must be the letter M.
37. If the Time Code is seven characters in length the seventh character must be the letter T.
38. Filename is not complaint with the COMNAME standard.
39. There must be a field for the Substation Identifier.
40. There must be a field for the Device Identifier.
41. There must be a field for the Company Name.
42. The start date must be numeric.
43. The start time must be numeric.

CHAPTER 5

Contact Information and Technical Support

Technical Support

If you have any questions about COMNAME Conformity Check contact Zach Makki, Monday through Friday between 9 AM and 6 PM.

Phone Number: (609) – 335 – 2007

Email: zach@softstuf.com